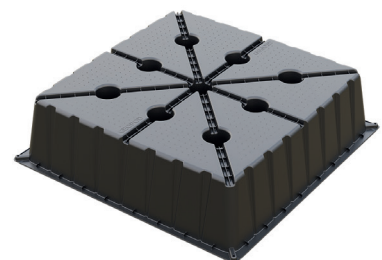


# GEOPOD

**NEW**



**MODULAR PERMANENT FORMWORK  
FOR RAFT SLABS PLACED  
IN COMPLIANCE WITH AS 2870-2011**



# ADVANTAGES



The spacer is specifically designed to allow sequential laying of the pods alternated with the spacers. Geopod is made of 100% recycled PP compound, in line with Geoplast focus on Green Building and Sustainability. The product offers great logistic advantages in comparison with the traditional waffle pods in EPS, with about 95 Sq.Mt. of ground slab that can be shipped in one pallet H180.



## REDUCED CONCRETE USAGE

Geopod comes in size 1090x1090 mm with rib centers paced 1200 mm, the maximum sizes allowable by Australian Standard for waffle slabs on ground.

Thanks to this, the concrete usage is reduced compared to smaller domes systems.



## LOGISTIC ADVANTAGES

Compared to EPS waffle pods, Geopod provides significant logistical advantages.

It is possible to ship almost 100 square meters of ground slab in a single pallet with a height of 180 cm!



## FAST INSTALLATION

The installation of Geopods on the ground is made easy and quick by the specifically designed spacer, which allows for sequential installation of pods, spacers, and pods.

# THE SOLUTION

Geopod is the newly launched product by Geoplast, specifically designed for expansive clay soils. Geopod is fully compliant with Australia Standards 2870-2011 Residential Slabs & Footings Standard.

The main pod is 1090x1090 mm, the max size allowable by AS, with ribs centers at 1200 mm. Product range includes Geopod-Midi (1/4 of the main pod) and Geopod-Mini (1/8 of the main pod) for horizontal compensations.

## RAFT SLABS COMPLIANT WITH AUSTRALIAN STANDARDS

## FOUNDATIONS ON EXPANSIVE CLAY SOILS

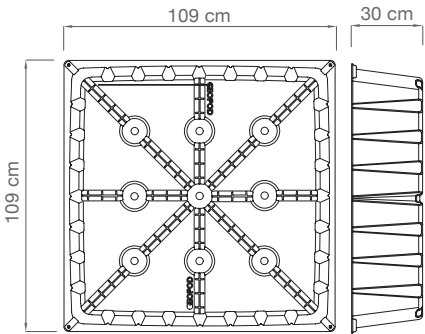
light and easy to handle

9 cones for strenght and stability

1090 x 1090 max size allowed by A.S 2870

# TECHNICAL DATA

Dimensions (cm)	109 x 109 x H30
Material	Graplene
Packaging size (cm)	110 x 110 x H240
No. of pieces per pallet	75
Product code	EGEOPOD0300



**GEOPOD MIDI**

545 x 545 x 225 mm

**GEOPOD MINI**

545 x 275 x 225 mm

**SPACER**

110 x 110 mm

**RIBS CENTRES AT 1200 MM**

1200 mm

# DETAILS



# ALSO INCLUDED IN GEOPLAST'S FOUNDATIONS SOLUTIONS DIVISION:



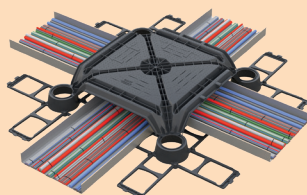
## MODULO

Formwork for filling and ventilated crawl spaces.



## NEW ELEVATOR

Modular formwork for structural filling and height compensation.



## MATRIX

Floating concrete floors for the passage of installations.



## SKYNET

Modular formwork for structural filling and height compensation.

Contact our technical office: +39 049 949 949 0289 - [ufficiotecnico@geoplastglobal.com](mailto:ufficiotecnico@geoplastglobal.com)

Download technical data sheet and other information by our website:

[GeoplastGlobal.com](http://GeoplastGlobal.com)

rev. 000/02/2023  
st. 02/2023



**Geoplast** Building beyond together

**Geoplast S.p.A.**

Via Martiri della Libertà, 6/8 - 35010 Grantorto (PD) - Italy

Tel +39 049 9490289 - Fax +39 049 9494028

[Geoplast@GeoplastGlobal.com](mailto:Geoplast@GeoplastGlobal.com) [GeoplastGlobal.com](http://GeoplastGlobal.com)

