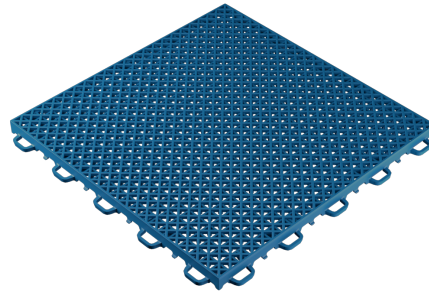


Technical sheet GRIPPER DOUBLE GRID

1. DESCRIPTION

GRIPPER DOUBLE GRID it is the ideal product for the construction of multi-purpose fields for soccer, tennis, basketball. Its size of 12" x 12" (one square foot) allows you to quickly create regulation tennis courts and other playing surfaces. The thickness of 1,5 cm and a uniform upper and lower structure guarantees a regularity of performance.



2. TECHNICAL CHARACTERISTICS

Material	-	Graplene VN
Standard colors	-	Royal Blue (RAL 5010) Leaf Green (RAL 6002) Traffic Red (RAL 3020)
Dimensions	cm	30.5x30.5 (12"x12") - 10.75 pz/m ²
Thickness	cm	1.5
Weight	kg	0.30 (± 10%)
UV stabilized	-	Yes
Surface finish	-	Double crossed grid at 45°
Hook type	-	Quick with snap-fit
Version	-	Smooth or rough
Planarity	mm	0.00
Vertical deformation	mm	1.2
Vertical ball bounce	%	97
Wear resistance	g	0.1
Color change	-	4
Smooth version friction	-	98 (dry 23°C) (EN14877:2013)
Rough version friction	-	106 (dry 23°C) (EN14877:2013)
Shock absorption	%	16
Shock absorption (with Geocomfort 5mm)	%	30 (EN14877:2013)
Installation time	m ² /h/worker	50
Place of production	-	Italy

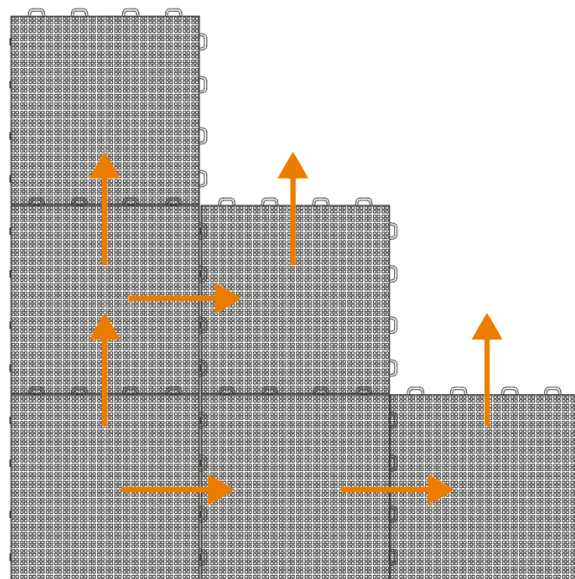
3. PACKAGING AND TRANSPORT

Product code	-	FGRIPDX3030 o FGRIDRX3030
Packing size	cm	100 x 120 x H210
Packing type	-	Stacked and wrapped in plastic film on pallets
Quantity per pallet	pc	1500
Surface per pallet	m ²	140
Gross package weight	kg	467

4. INSTALLATION METHOD

Installation surface: Gripper should preferably be laid on flat rigid surfaces with a smooth finish (concrete, asphalt, resins, floors, etc.). Before applying Gripper, the surfaces must be cleaned of dirt, dust, oil, grease, adhesive residues, and other foreign materials.

Gripper installation: The tiles are laid using a quick snap-fit coupling. The direction of installation is from bottom to top and from left to right, keeping the hooks up and to the right. For faster installation, the sheets of 4 x 3 tiles can be hooked directly (always following the direction of installation), which are supplied already hooked and stacked on pallets. In the event of outdoor installation, an expansion joint must be left near the curbs and any other object that could hinder thermal expansion. The expansion space depends on the size of the playing field, but at least 5/10 cm is recommended.



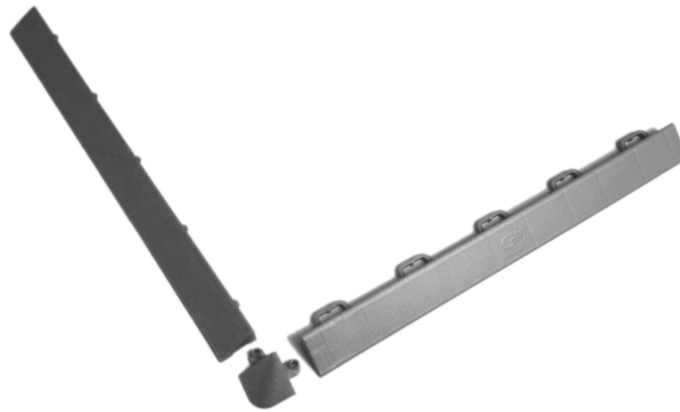
Drawing demarcation lines: Thoroughly clean Gripper flooring surface. The lines must be drawn with normal road-type paint, first delimiting the lines with paper tape and then marking them with paint, finally removing the tape when the work is completed.

Cleaning: Gripper can be cleaned like a normal smooth sports surface, with water, non-aggressive detergents, vacuum cleaner, brushes, etc.

Technical sheet GRIPPER DOUBLE GRID RAMP (optional accessory)

1. DESCRIPTION

Side ramp for Gripper Double Grid



2. REFERENCE DIMENSIONS

Height	cm	1.5
Width	cm	2.5
Length	cm	30.5