

NEW ELEVETOR RESIDENTIAL

Location: Modena, Italy

Project: Block of flats

Structure: foundation fill

Total surface: 500 m²

Product used: NEW ELEVETOR H125



Fig. 1
Job site

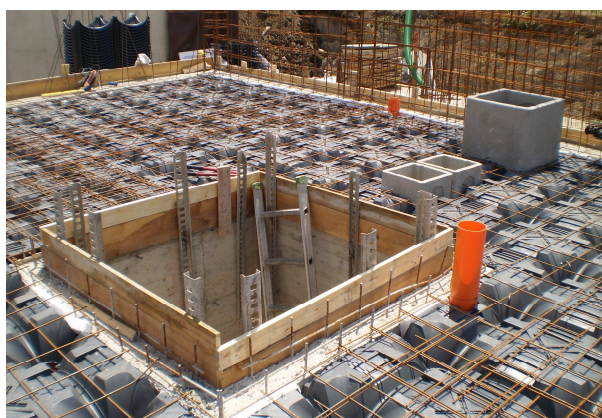


Fig. 2
Detail of the lift shaft



Fig. 3
Detail of the compensation with a strip of polystyrene



Fig. 4
Finished building

Soft soil conditions forced the engineer to design deep foundations. New Elevetor made it possible to avoid the backfill with aggregate, creating at its place a crawl space useful for the elimination of ground moisture and Radon gas (ref. fig. 2 for detail of ventilation pipe).